



## PTW ASIA PTE LTD

### SEZ DV34 – SPIN ETCHER

<b>Manufacturer</b>	SEZ
<b>Model</b>	DV34
<b>Product Description</b>	Single wafer wet chemical processor
<b>Other Information</b>	Multi- Chamber System ATMI 4201 concentration monitoring system Horiba CM210 concentration monitoring system
<b>Year of Manufacture</b>	
<b>Serial Number</b>	00875
<b>Wafer Size</b>	300 mm (12 inch)
<b>Number of Chamber</b>	4
<b>Number of CHC</b>	2 (Internal)
<b>Number of Load Port (Type)</b>	2 FOUP
<b>Condition</b>	Excellent
<b>Missing Items</b>	NIL

--	--

<b>Conversion Capability</b>	i) Refurbish to specification
	ii) 200mm (8 inch) wafer size option

--	--

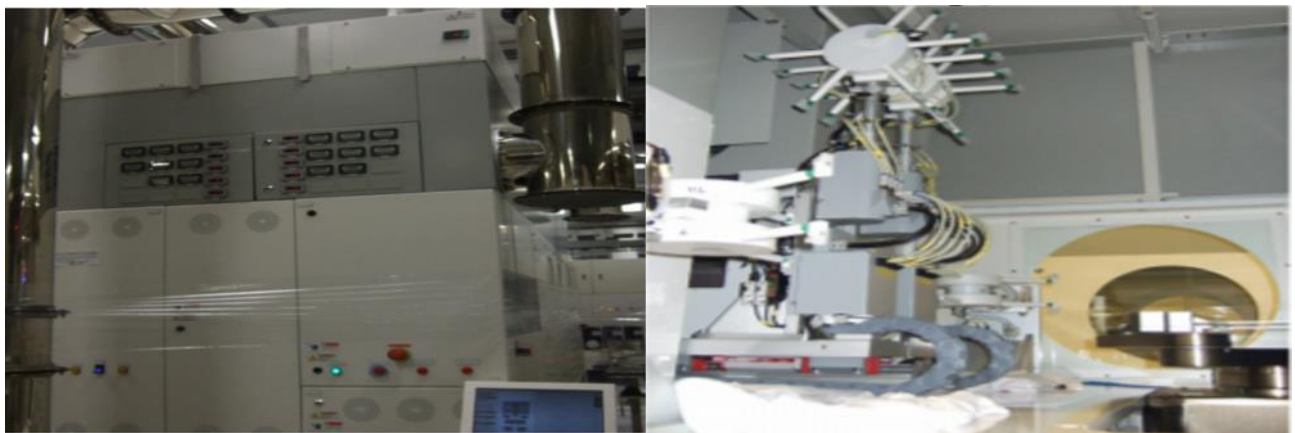
An Example of PTW refurbishment:

[https://www.youtube.com/watch?v=ZRjt\\_NFhdzM](https://www.youtube.com/watch?v=ZRjt_NFhdzM)

This data sheet is provided to you on a strictly confidential basis and contains commercially sensitive and valuable information. No part of its content may be provided to any person without our prior written consent. This data sheet is not an offer capable of acceptance. The information contained in this data sheet is, to our knowledge and information, accurate, but it may contain typographical errors and we do not warrant the completeness or accuracy of the information contained herein. Any offer by you to purchase of the equipment described in this data sheet shall be subject to our standard terms and conditions of sale. The Equipment being quoted is described as NEW.



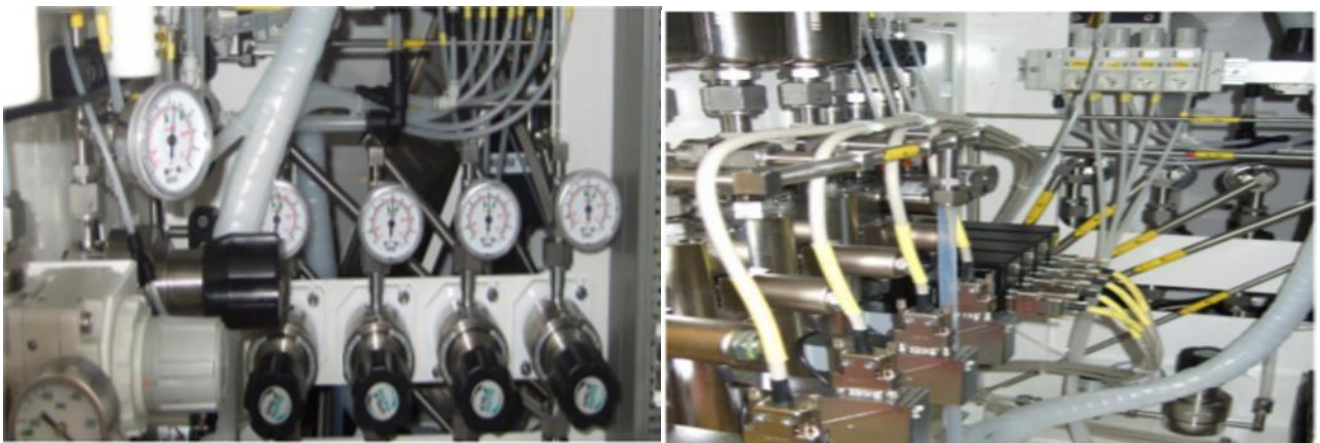
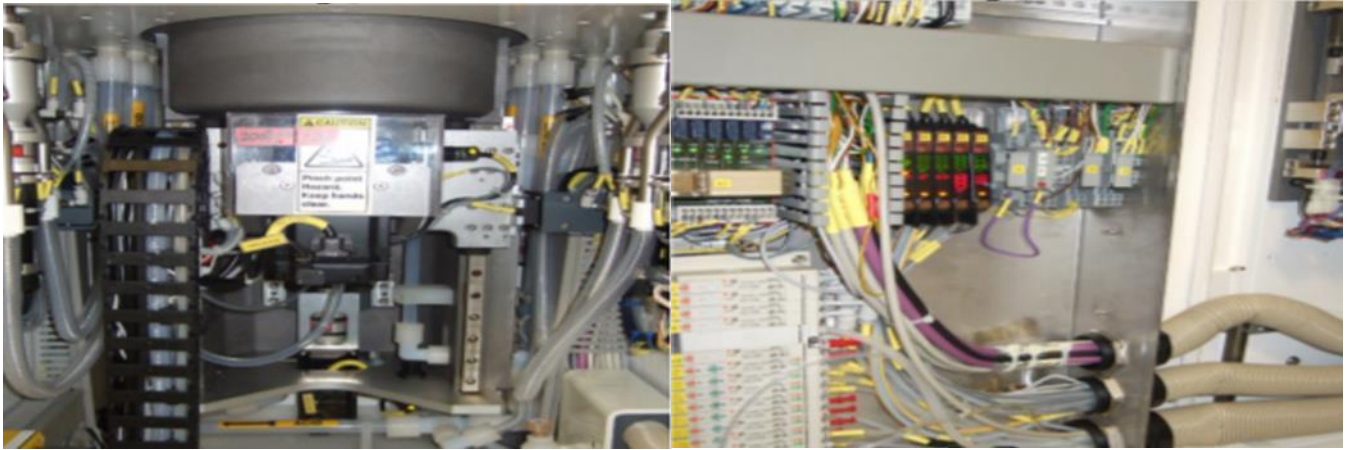
## PTW ASIA PTE LTD



This data sheet is provided to you on a strictly confidential basis and contains commercially sensitive and valuable information. No part of its content may be provided to any person without our prior written consent. This data sheet is not an offer capable of acceptance. The information contained in this data sheet is, to our knowledge and information, accurate, but it may contain typographical errors and we do not warrant the completeness or accuracy of the information contained herein. Any offer by you to purchase of the equipment described in this data sheet shall be subject to our standard terms and conditions of sale. The Equipment being quoted is described as NEW.



## PTW ASIA PTE LTD



All Equipment is offered subject to prior sale. This item will be quoted based upon specific terms and configuration required. Interested parties may contact PTW Asia Pte Ltd at: [ask@ptwsingapore.com](mailto:ask@ptwsingapore.com)

Visit our web site at [www.ptwsingapore.com](http://www.ptwsingapore.com) © 2019 PTW ASIA PTE LTD.

This data sheet is provided to you on a strictly confidential basis and contains commercially sensitive and valuable information. No part of its content may be provided to any person without our prior written consent. This data sheet is not an offer capable of acceptance. The information contained in this data sheet is, to our knowledge and information, accurate, but it may contain typographical errors and we do not warrant the completeness or accuracy of the information contained herein. Any offer by you to purchase of the equipment described in this data sheet shall be subject to our standard terms and conditions of sale. The Equipment being quoted is described as NEW.